

WARNING!!!

**DAMAGE TO VEHICLE WILL OCCUR IF
NOT PROPERLY INSTALLED!**

READ INSTRUCTIONS THROUGHOUT BEFORE INSTALLATION.

Westcott Designs: 2022+ Tundra/2023+Sequoia Ditch Light Bracket Installation

Version 9.30.2022

Questions/Contact Information:

Toll Free: (888) 574-5270

Local: (480)750-8747

westcottdesigns.net

2022+ Tundra Ditch Light Bracket Installation

1. See fitment notes to see if there are any specific notes in relation to the lights being installed.
2. Remove rubber/plastic cap covers near bottom corner of windshield. These will be re-installed, but the passenger side will require some trimming.



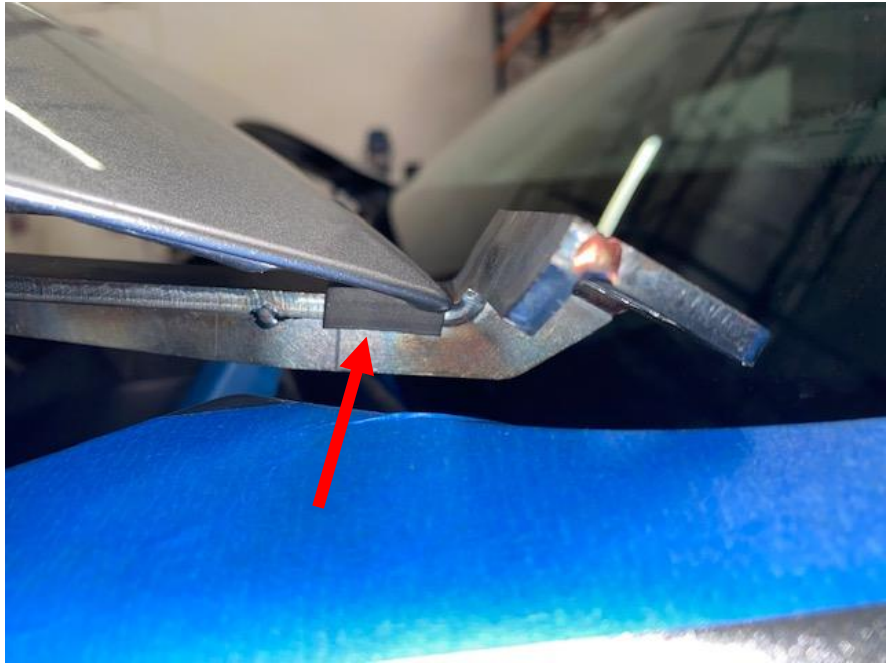
3. Open hood.
4. Remove only the top bolt from the hood mount on the hinge, DO NOT remove both hood mount bolts at the same time at any point during the installation.



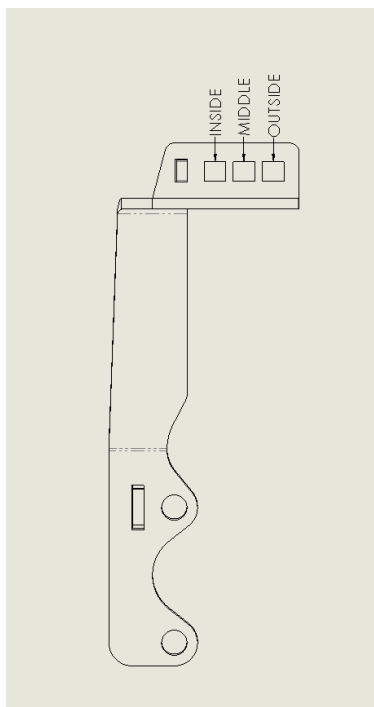
5. Install the ditch light bracket onto the hood hinge bolt, making sure not to pinch the wire on the driver's side. Tighten the bolt up so it is snug but allows the ditch light mount to swing over to complete the installation.



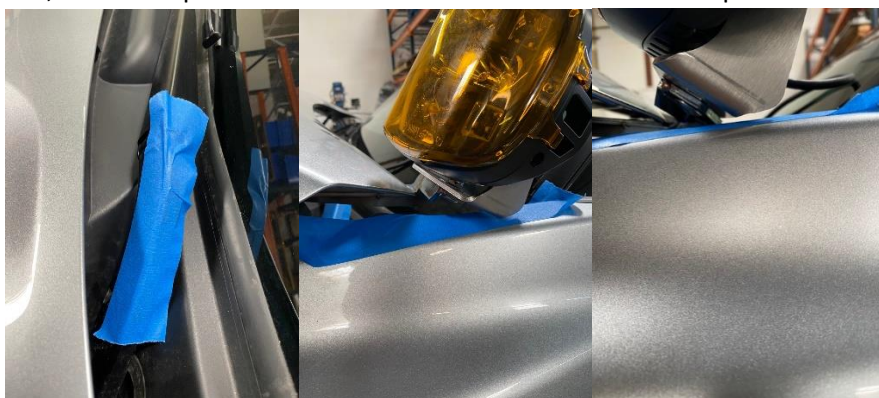
6. Use a socket with a short extension on a ratchet to prevent scratching the paint in the area to remove the lower bolt. For 5" and lights to reduce vibration, rubber trim is provided to put in between the ditch light mount and the edge of the hood. For applications requiring the trim, slide the trim onto the mount and then the bottom hood mount bolt. Remove the lower bolt for the hood mount on the hinge and swing the ditch light mount to align the holes and re-install the bolt.



7. Tighten both top and bottom bolts to the manufacturer's specification.
8. READ AND UNDERSTAND LIGHT MOUNTING LOCATION TO PREVENT DAMAGE TO THE VEHICLE. THESE MOUNTS ARE LOW PROFILE AND DISREGARDING THESE INSTRUCTIONS WILL CAUSE DAMAGE. The outside and inside holes are for 5" and above lights, the middle hole is for 4" and below. Skip to the step in-relation to the light being installed on the vehicle.



9. Starting on the driver's side the **OUTSIDE** hole is used for 5" and larger lights in a straight ahead to 15° turned towards the outside of the vehicle. This hole is shifted to the outside to prevent the windshield wiper from contacting the light mount. The 3/4" long carriage bolt is installed from the bottom up and the hood will need to be open to install the bolt and nut loosely. After the bolt is installed, gently nearly close the hood and then continue with the light installation process. Install the light with the supplied washer and thin nut from the Westcott Designs kit with the light beam directed straight ahead. With the light snug, but still able to spin on the mount, put some masking tape on the windshield wiper and along the edge between the hood and windshield. Close the hood. Go into the vehicle press the start button twice without the brake pedal to turn the vehicle on. Press the wiper switch up so it only completes one cycle. Check to make sure there is clearance between the wiper and the light mount at the desired light direction angle before tightening the light mount fully. Open the hood slowly to make sure the light mount does not come in contact with the body. Complete the same process for the passenger side, but the wiper clearance check does not need to be completed.



10. Starting on the driver's side the **MIDDLE** hole is used for **4"** and smaller lights with mounts that are smaller than the ditch light mounting pad. These lights can be installed at most angles but should still be checked for clearance. The $\frac{3}{4}$ " long carriage bolt is installed from the bottom up and the hood will need to be open to install the bolt and nut loosely. After the bolt is installed, gently nearly close the hood and then continue with the light installation process. Install the light with the supplied washer and thin nut from the Westcott Designs kit with the light beam directed at the angle desired. With the light snug, but still able to spin on the mount, put some masking tape on the windshield wiper. Close the hood. Go into the vehicle press the start button twice without the brake pedal to turn the vehicle on. Press the wiper switch up so it only completes one cycle. Check to make sure there is clearance between the wiper and the light mount at the desired light direction angle before tightening the light mount fully. Complete the same process for the passenger side, but the wiper clearance check does not need to be completed.
11. Starting on the driver's side the **INSIDE** hole is used for **5"** and larger lights turned 15° or more towards the outside of the vehicle. This prevents the windshield wiper from contacting the light mount. The $\frac{3}{4}$ " long carriage bolt is installed from the bottom up and the hood can be nearly closed to install the bolt and nut loosely. Install the light with the supplied washer and thin nut from the Westcott Designs kit with the light beam at 5° or more towards the outside of the vehicle. With the light snug, but still able to spin on the mount, put some masking tape on the body under the ditch light mount, up to the base of the windshield. Open the hood slowly to make sure the light mount does not come in contact with the body. Adjust the light angle as necessary to make sure there is approximately $\frac{1}{4}$ " gap to the body with the hood open. Close the hood. Go into the vehicle press the start button twice without the brake pedal to turn the vehicle on. Press the wiper switch up so it only completes one cycle. Check to make sure there is clearance between the wiper and the light mount at the desired light direction angle before tightening the light mount fully. Complete the same process for the passenger side, but the wiper clearance check does not need to be completed.



12. Re-install the driver's side plastic rubber cap between the hood and windshield. The easiest way to install is with the hood $\frac{1}{2}$ to fully open.
13. Trim the passenger side rubber cap between the hood and windshield to clear the ditch light bracket based on the photos below. There should be about $2\frac{1}{4}$ " from the bottom to the top of the relief cut.



14. Have the wiring for the lights completed by a professional to the light manufacturer's specifications. The battery on hybrid equipped vehicles is under the driver rear seat.

Fitment Notes:

- Baja Designs XL-80: These mounts can only be installed in the straightforward configuration in the outside hole. Any angle runs the risk of contacting the body in any of the holes due to the size of the mount. The LP line from Baja Designs has narrower mounts and will allow more angled fitment.

Recommended Tools

- Ratcheting 12mm Wrench
- 12mm Socket
- Ratchet
- 2-3" Ratchet Extension
- ½" Wrench
- Masking Tape